



THE SHADOW CHASER

AARON HALL

Pitch Deck

ABOUT THIS PROJECT

Genre	Psychological horror, murder mystery, drama
Length	30-minute narrative short
Audiences	Ages 15-25, horror filmgoers
Budget	\$150,000 to \$165,000
Funding	Crowdfunding, connecting with investors
Settings	May–June 1693; Salem, Massachusetts

The background is a dark, atmospheric painting. It depicts a scene from a Salem witch trial. In the center, a large bonfire burns brightly, casting a warm, yellowish light. To the right, a figure is visible, holding a torch that also glows. The overall mood is somber and mysterious, with deep shadows and highlights from the fire.

LOGLINE

After awakening to a string of murders he cannot recall committing, an ordinary Salem citizen grapples with morality and sanity while compelled to join forces with a mysterious specter in their tragic quest to uncover the truth.

**THIS STORY
EXPLORES SANITY,
AUTONOMY,
IDENTITY, MORALITY,
AND THE HUMAN
CONDITION.**

This film explores the nature of good versus evil. However, evil could manifest differently, and uncontrollable circumstances could affect people's motives and actions. This question is apparent in a time when distrust and paranoia are rampant.

In short, are people truly responsible for their actions if they lack freedom in their choices? Are people truly evil if there are uncontrollable circumstances that dictate their lives?

LENNOX

Bio

Lennox is a 21-year-old young adult living in Salem. He is a complex character grappling with internal conflict and external challenges.

Despite being thrust into an uncontrollable situation, Lennox demonstrates resilience in the face of adversity. His morality will be tested in his treacherous quest to unveil the truth.

Traits

Forthright, courageous, strong, athletic, introspective.



CHARLOTTE

Bio

Charlotte is an enigmatic and mysterious woman who is a victim of an attack caused by five villagers due to being accused of witchcraft.

Despite her seemingly innocent appearance, there seems to be more than meets the eye.

Interestingly, she does not embrace evil by choice but is ensnared by unfortunate circumstances.

Traits

Enigmatic, mysterious, reserved, vengeful.



THE SHERIFF

Bio

The Sheriff is the man in charge of Salem's law enforcement. He has an air of authority and control and uses his position of power to ruthlessly abuse those he accuses as criminals.

He finds pleasure in harming criminals as he views his actions as justifiable.

Traits

Authoritative, cocky, abusive.





THE SHADOW

The Shadow is a malevolent specter consumed by vengeance and fury. She appears as a dark, intangible silhouette, shrouded in darkness and emanating an aura of dread. With the ability to control people's bodies, she exudes an otherworldly presence that instills fear in her victims.

The Shadow is driven by a single-minded determination to seek revenge for her murder two years ago. Despite her spectral form, she possesses an eerie intelligence and cunning, able to manipulate Lennox and mentally break his spirit and willpower.

PRODUCTION SCHEDULE

January 2024–April 2024

April 2024–July 2024

July 2024–September 2024

September–March 2025

Development

- Writing screenplay
- Continue researching the lifestyle of 17th-century Salem
- Casting key actors and creatives

Pre-Production

- Finalize casting talents
- Crew hiring
- Finalize budgeting, scheduling, location scouting

Production

- **Early July** – Shooting scenes in the woods and forest first
- **Late July to September** – Film the rest of the scenes that are in Salem

Post-Production

- Adding music, color grading, voice-over
- Adding VFX for shadow effects
- Rough cut
- Trailer cut
- Final cut

MARKETING & DISTRIBUTION

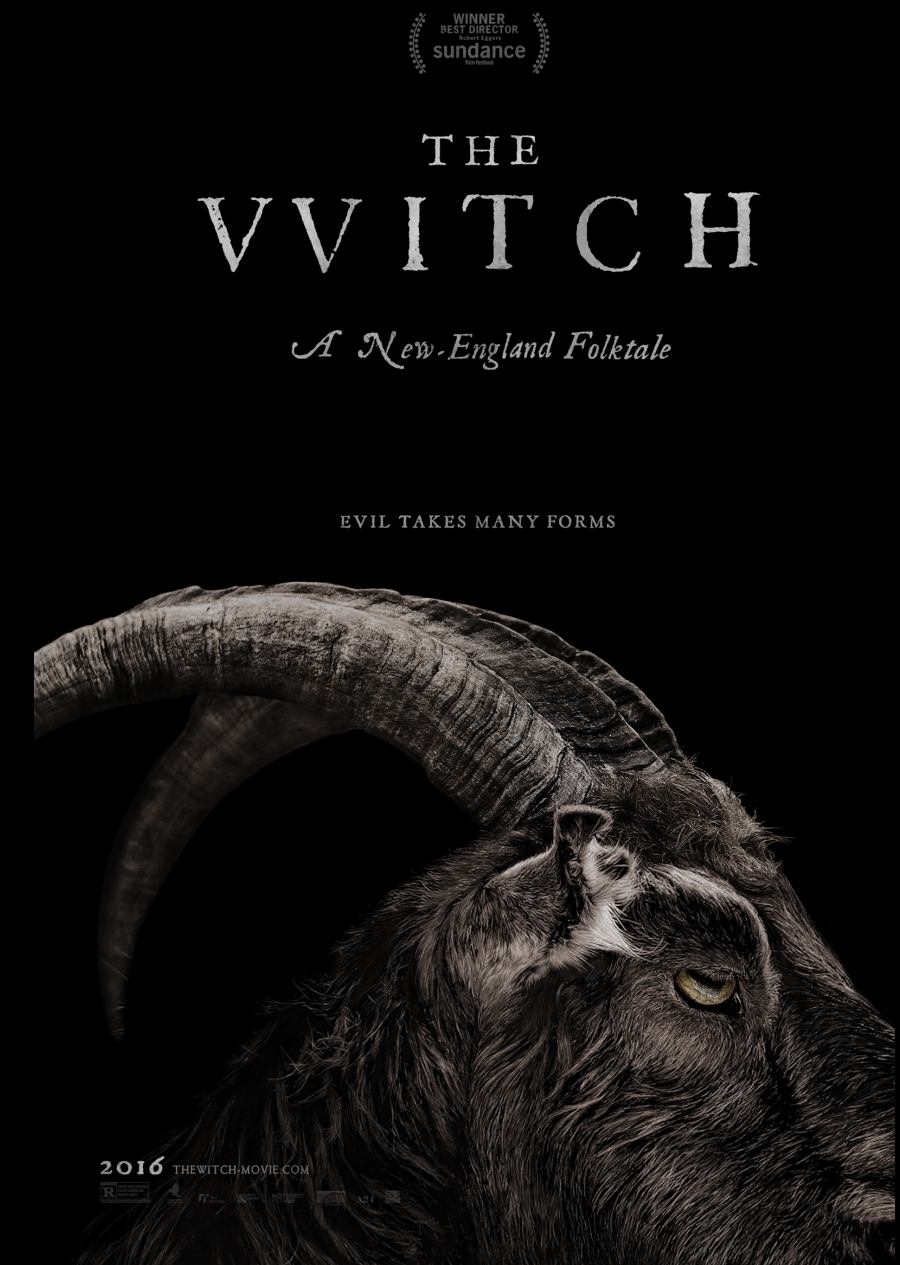
Film Festivals & Events	Promotional Marketing	Distributors	Streaming Options
<ul style="list-style-type: none">• Sundance Film Festival• Toronto International Film Festival• Haunted House FearFest• Fantastic Fest• Fantasia International Film Festival• Screamfest Horror Film Festival• Toronto After Dark Film Festival• Toronto After Dark Film Festival• The Valley Film Festival	<p>Social Media Platforms:</p> <ul style="list-style-type: none">• YouTube• TikTok• Instagram• X/Twitter <p>Marketing Strategies:</p> <ul style="list-style-type: none">• Interactive camera installation where audiences see their own distorted shadow (in select theaters)• Interactive minigame where the player needs to find and catch the imposter based on subtle clues (digital campaign)	<ul style="list-style-type: none">• A24• Netflix• Blumhouse Productions• SpectreVision• Ghost House Pictures• Terror Films	<ul style="list-style-type: none">• Netflix• Shutter• Hulu• Amazon Prime Video



The Sixth Sense 1999

Similar premise of the main character being a young person who can communicate with the dead.

COMPS



The Witch 2015

It also takes place in New England in the 17th century. This film also deals with distrust and inner turmoil in the presence of a supernatural threat.

PRODUCED BY AARON HALL

Aaron Hall is from Northern New Jersey.

He graduated from the S.I. School of Public Communications at Syracuse University with a major in Television, Radio, and Film and a minor in Philosophy.

In his free time, he enjoys having passionate discussions about ethics. He also enjoys analyzing movies from a philosophical perspective.

He is holding an Emmy Award in this picture, which he enjoyed posing with during one of his Newhouse professor's office hours.



STATEMENT



As the writer of *The Shadow Chasers*, I am deeply intrigued by delving into the complexities of human nature.

My goal with this film is to engage viewers with a gripping narrative that questions morality, redemption, and good and evil.

By blending suspense, mystery, and tension, I aim to challenge audiences to ponder what defines a 'monster.' ***How much could we stick to our moral values when we have external pressure?***

By setting the story just after the Salem Witch Trials, ***the story deals with identity, trust, survival, and fear of the unknown.***

Ultimately, I hope that viewers take away the importance of empathy and avoid making hasty judgments when dealing with different people. In short, the truth isn't always what it seems.

CONTACT

LinkedIn

Aaron Hall

www.linkedin.com/in/aaron-462-hall

Phone

+1 (973) 393-2850

Email

aha46290@gmail.com

Image designed using Shutterstock AI